

# *Hotpoint* **Toaster**

Manufactured and Guaranteed by  
**HOTPOINT ELECTRIC HEATING CO.**  
Ontario, Calif. Chicago New York London  
Canadian Hotpoint Electric Heating Co., Limited  
Toronto, Canada

For

**CHARLES H. CHURCH**  
Haddam, Conn.

Price includes cord-no allowance made  
for its omission

# —the loyal friend of toast eaters, both young and old—

Hotpoint Electric Toaster on your breakfast table brings the young folks around in time to get off to school. They just demand Hotpoint Toast, once they've tasted it. And it's so good for them; light, appetizing and easily digestible. Exceedingly good for older folk, too. Hotpoint Toaster quickly toasts two slices at one time—and does it economically.

You scarce can realize the importance of having Hotpoint Toaster in your home to prepare toast hurriedly for that hurry-up meal, breakfast. There's no better way.

When your toast is made as easily as shown here, you'd enjoy it more. How different than the old way. Making it in the oven or on the stove is so tedious. Some member of the family always has to be out in the kitchen

during breakfast tending to the toast. And often, even with greatest care, some of the toast is burnt. It seems never to be just right.

With the advent of this **LOYAL FRIEND OF TOAST EATERS**, Hotpoint Electric Toaster in your home, comes new toast joy. It makes crispy, crunchy, golden brown toast; uncharred, not soaked with fuel or gas fumes. Clean and wholesome. Appetizing. Hot. Irresistible.

## Hotpoint Toaster

- operates from any lamp-socket.
- made of pressed steel, handsomely finished nickel.
- has self-operating bread clamps on each side.
- equipped with fiber feet. Cannot injure highly polished surfaces.
- size, at feet, 4"x7" —6 $\frac{3}{4}$ " high.
- wattage, 450.
- guaranteed against electrical and mechanical defects for one year.

### So Simple to Operate--

- use but one hand.
- raise bread-clamp with slice of bread and slip into place.
- the clamp holds bread firmly until you're ready to turn it.
- bread rack on each side, large enough for usual slice from 10 cent standard size loaf.
- keep toast, or pot of tea or coffee hot on top.

Hotpoint  
Toaster

Why deprive yourself  
of its help and convenience any longer?

Let us show you and tell you more about Hotpoint Toaster.

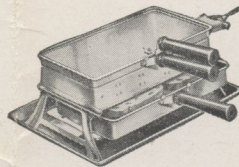




Hotpoint Iron



Hotpoint Boudoir Set



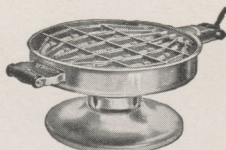
Hotpoint Radiant Grill [Rectangular]



Hotpoint Ovenette



Hotpoint Valveless Percolator [Aluminum]



Hotpoint Radiant Stove [Round]



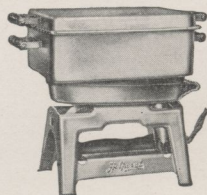
Hotpoint Valveless Percolator [6-cup—Nickel]



Hotpoint Immersion Heater



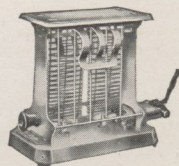
Hotpoint Valveless Percolator [Grecian Urn—Machine]



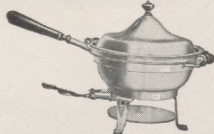
Hotpoint Cooking Set



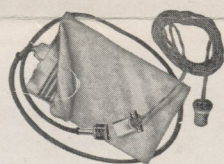
Hotpoint Valveless Percolator [Colonial—Machine]



Hotpoint Toaster



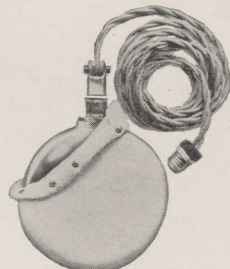
Hotpoint Chafing Dish (No. 4)



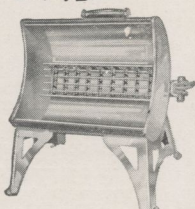
Hotpoint Safety Comfo [Metal Flexible]



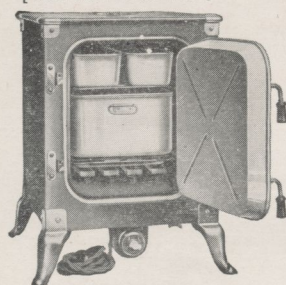
Hotpoint Chafing Dish (No. 6)



Hotpoint Vacuum Cleaner [Aluminum]



Hotpoint Radiant Heater [600 and 1000-watt]



Hotpoint Electric Cooker

**HOTPOINT IRON**—The Iron celebrated for its hot point, cool handle and attached stand (eliminates lifting). 3, 5 or 6-lb. size. (\*)

**HOTPOINT COOKING SET**—Inverting stand to convert the Hotpoint Iron into an electric stove. Furnished with two seamless aluminum dishes.

**BOUDOIR SET**—A 3-lb. Hotpoint Iron. Attachment for heating Curling-tongs; Curling-tongs and Inverting Stand. Set packs in neat Felt Bag.

**VALVELESS PERCOLATOR**—Aluminum electric coffee Percolator. Imparts no metallic taste or taint. Starts to percolate, from cold water, within 30 seconds. 6-cup. Also made in copper—tin-coated, inside—finished in highly polished nickel outside. (\*)

**VALVELESS PERCOLATOR**—Nickel Coffee Percolator. Two designs: Grecian Urn and Colonial. Made of copper, highly polished nickel outside, tinned inside. (Have faucet instead of spout), 9-cup. (\*)

**RADIANT STOVE**—7-inch Glowing-coil round Stove. Heats up in 15 seconds. Does regular kitchen cooking from any lamp-socket. Uses any kind of dishes.

**TEA POT**—Tea-ball Teapot (not shown here). Brews perfect infusion, with all the true flavor of the leaf. Heating Element in center of pot, same as Nickel Percolator. 7-cup. (\*)

**RADIANT GRILLS**—Electric rectangular Grill that fries, broils, toasts and boils, both above and below its glowing coils. Also pops corn. Furnished with dishes. Round, made in single and three-heat. (\*)

**TOASTER**—Toasts two slices of bread at one time, while pot of coffee or tea may be kept hot on top. (\*)

**CHAFING DISHES**—No. 4, a set of dishes to fit top of Hotpoint Radiant Stove, Round Grill or 6-inch disc stove. Style No. 5 is complete with Heating Element. (\*). Style No. 6 is same in construction as No. 5, but heavier and in handsome Mission style. (\*)

**IMMERSION HEATER**—An efficient Electric Immersion Heater, which is plunged direct into the liquid to be heated. Toilet size, Kitchen size, Professional model (crooknecked) for sterilizing, etc.

**ALUMINUM SAFETY COMFO**—Hot-pad. Has removable and washable cloth cover. Gives any temperature required. Sanitary, economical, effective for every purpose hot-water bottles are used.

**METAL, FLEXIBLE SAFETY COMFO**—Hot-pad. Flexible. Will fit around neck, shoulder or limb, etc. No water to heat—no rubber water-bottle to fill—no rubber to deteriorate.

**DISC STOVE**—Four-inch size; does light cooking. Fine in sick-room, nursery, or when traveling. Six-inch size is for regular kitchen service. Made in single and three-heat. (\*)

**ELECTRIC COOKER**—Roasts, bakes, boils, fries, steams, stews. Complete meal in one operation. (\*)

**LAMP-SOCKET OVEN**—Electric Oven. Roasts a chicken, bakes two loaves of bread, two pies, etc. Three-heat.

**RADIANT HEATER**—Lamp-socket. Luminous Radiator. Sheds a warm, comforting glow. Fine for bath-rooms, small offices, etc. (\*)

**FOOT WARMER**—(Not shown here.) Also used as heater, under desk or table. 10x12x1½ to 3 inches. (\*)

**HOTPOINT OVENETTE**—A practical oven for use on Hotpoint Round Radiant Grill or Stove. Bakes, roasts and boils anything its capacity will accommodate.

**HOTPOINT VACUUM CLEANER**—Made of steel—Air-cooled Motor; 12-inch suction nozzle; adjustable Rear Roller; light weight. Set of 6 attachments furnished at slight extra cost.

(\*) This appliance may be used with the cord of any of the others marked with an asterisk. Should you desire to purchase it without the cord, allowance will be made for same.

## HEAVIER Hotpoint APPLIANCES

AMONG the Hotpoint Appliances for heavier work, and which cannot be operated from a lamp-socket, but require special wiring, are the following:

**STANDARD OVEN**—Large Oven. Also has broiling Element.

**AIR HEATER**—For warming rooms; 1000 to 3000 watts.

**DISC STOVE**—Same as 6-inch, 3-heat, in 7, 8 and 9-in.

**TWIN DISC STOVE**—Combination of 7 and 9-in., in a frame, with swinging Warming bracket.

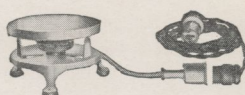
**TRIPLE DISC STOVE**—The 7, 8 and 9-in. discs in a frame, with two swinging warming brackets.

Also Electric Irons for use in laundries and by tailors.

**RADIANT HEATER**—For warming rooms. Operated by indicating snap-switches, each giving 3-heats. Built in design of old English grate. Made in three sizes: 1200, 1800 and 3000-watts. Also made in 1000-watt single-heat—designed same as 600-watt.

**HOTPOINT RANGE**—Made in five models—suited to the needs of large or small families. Ask for complete information.

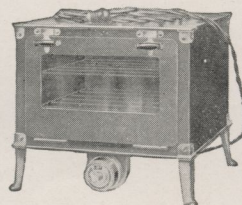
Prices upon Application—  
Ask Your Dealer or Lighting Company.



Hotpoint Disc Stove [4-inch]

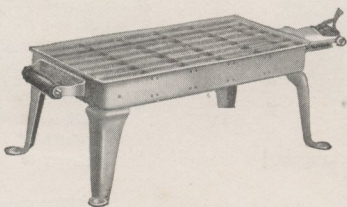


Hotpoint Radiant Grill [3-heat]



Hotpoint Lamp Socket Oven





## *Hotpoint Toaster Stove*

An all-'round breakfast or light lunch utility. Operates from any lamp-socket—uses any kind of small utensils.

Hotpoint Toaster Stove is such a competent useful appliance. Unfailing, convenient and economical to operate.

Makes two slices of crispy, golden brown toast at one time. Toasts the outside surface of the bread quickly—leaves the inside soft and hot. Delicious, beyond description.

Then also, you can prepare coffee, tea or cocoa, or in a small metal frying pan, fry eggs, bacon, pork-chops or any other delectable dish.

But you must have one of these Toaster Stoves in your own home to truly appreciate its value.

Hotpoint Toaster Stove is substantially built of steel,  $4\frac{1}{2}'' \times 8\frac{1}{2}'' \times 4\frac{1}{2}''$  high. Finished in highly polished nickel; has ebonized wood, always-cool handle and is provided with cord, attachment plug and interchangeable switch-plug. Wattage, 500. Guaranteed against electrical and mechanical defects for one year. Price, \$4.00.

Hotpoint Toaster, shown on inside of this folder, complete, \$4.00.